



“Products designed for the installer,  
by an installer, that protect  
the environment and  
preserve its future”

THE  
STOVE  
BOX



# Quicker, easier and safer way to install a Stove

After designing and installing fireplaces for over 35 years we have created a product that offers 4 ways of installing a stove. The benefits are:

- A separate flue collar (5" and 6") which can be adjusted both forward and backward. This enables the collar to line up with the existing flue.
- Quicker on site installation.
- A nice square ridged opening
- Because of the insulation when the box is inserted in the opening, performance is enhanced from the stove. Direct heat is maintained in the room.
- The stove fitted in a stove box will get hotter quicker and stay warmer longer by using less fuel.

The Stove Box comes in four fixed sizes, SB1, SB2, (adjustable) and Blazer and SB4 (rigid). When installed, the stove box sits on the hearth and it is sealed before any fireplace is placed in front. There are then many ways to complete the look of your perfect fireplace with a range of interiors, fascia plates and frames. We hope this will be informative and helpful when choosing your gas, wood, or multi-fuel stove.



## What makes The Stove Box installation special?

In June 2014 we carried out testing showing the difference between a normal register plate install and The Stove Box installation. This was carried out in a laboratory at Kiwa in Cheltenham and as a result of the findings, Hetas made a new listing in their product book for using The Stove Box as an alternative installation when a wood, multi-fuel or gas stove was required in a chamber. All our installations are now carried out using The Stove Box where possible and we have a growing list of installers using the system.

The Stove Box has changed stove fitting throughout the UK due to its environmental benefits. It is approved by building control and HETAS. Kiwa, a UKAS-accredited company, carry out testing (and often certification) on appliances, construction materials, electrical and water products. They also carry out energy monitoring field trials to carbon verification. The overall effect of the findings described will result in a householder feeling more comfortable and hotter (both quicker and ultimately) in a room with a Stove box installation than one from the same appliance burning under the same conditions in a "conventional" fireplace surround.



Assessment 13th June 2014  
by Kiwa Cre 60427







Now an HETAS approved product

## Features at a glance

The Stove Box is designed with a range of finishing touches for interiors, frames and fascias

- |                          |                            |
|--------------------------|----------------------------|
| <b>A</b> Adapter         | <b>H</b> Insulation        |
| <b>B</b> Stove Pipe      | <b>I</b> Adjustable Collar |
| <b>C</b> Lintel          | <b>J</b> Interior options  |
| <b>D</b> Top Flange      | <b>K</b> Frame options     |
| <b>E</b> Fixing Brackets | <b>L</b> Stove             |
| <b>F</b> The Stove Box   | <b>M</b> Hearth            |
| <b>G</b> Front Flange    |                            |



# The Stove Box

The Stove Box cannot be fitted without a fire resistant interior included. We have a number of adaptors for connecting the flue liner, patented adjustable collars which bolt on allowing a sliding movement for easy access to above the box for connecting to the liner and for servicing.

## Fit The Stove Box in 5 easy steps

STEP 1



Chop out the fire opening and place on the hearth in position.

STEP 2



Insert The Stove Box onto the hearth, fix and insulate.

STEP 3



Fit back panel, connect the fluepipe, the stove and test.

STEP 4



Fit the sides to the interior, brick up and plaster.

STEP 5



Fit frame or chosen fireplace and commission appliance.

## Rigid SB1, SB2 and SB4 and Blazer

The Stove Box is available in 4 fixed sizes and is supplied flat pack. If depth is a problem the SB1 and SB2 now comes as an adjustable option. The stove box must be fitted to meet building regulations. The appliance must be fitted by an approved installer and do not fit a stove with a higher kW than suggested. The kW recommendations shown are based on our installations over the last 4 years.

The Blazer Box is used for our false chimney breasts and has ducting holes. See our website [www.thestovebox.co.uk](http://www.thestovebox.co.uk) for more information on ducting warm air from the top of the stove box, back into the room.



37"W x 34"H x 18"D  
(94cm x 86cm x 46cm)  
Up to 8kW



31"W x 32"H x 16"D  
(79cm x 81cm x 41cm)  
Up to 5kW



34 1/2"W x 36"H x 16"D  
(88cm x 91cm x 41cm)  
Up to 8kW



38 1/2"W x 38"H x 18"D  
(98cm x 96cm x 46cm)  
Up to 9kW

## Adjustable SB1 and SB2

Adjustable SB1 37"W x 34"H x 14-18"D  
(94cm x 86cm x 35-45cm)

Adjustable SB2 31"W x 32"H x 12-16"D  
(78cm x 81cm x 30-40cm)



## Lined Interiors

- Plain fireboard for painting or tiling
- Textured fireboard to paint
- Reeded fireboard
- Featured brick, various patterns, stone and much more...



New Brick Bond



New Brick Herringbone



Oyster



Ochre



Reeded board



Plain board

Old brick and Adams brick are made from handmade bricks and can only be purchased with the Stove Box as an interior. All other samples can be supplied as a chamber using our adjustable register plates.



Textured board



Adams Brick



Old Brick



Brick tile available in Red or Brown



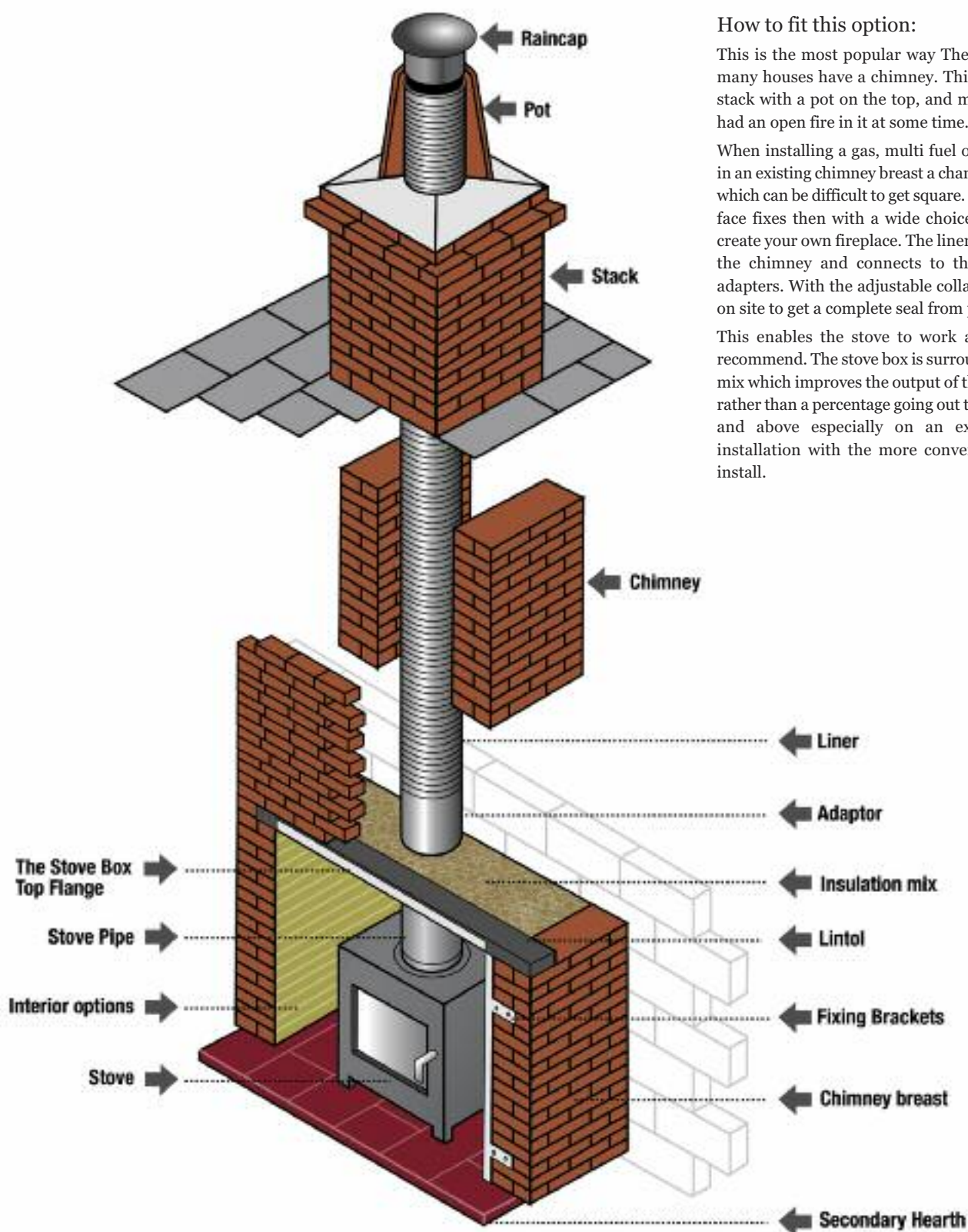
Zebra



OPTION  
1

There are 4 easy options for installing The Stove Box

## Chop into an existing chimney breast



How to fit this option:

This is the most popular way The Stove Box is used as many houses have a chimney. This will have a chimney stack with a pot on the top, and most likely would have had an open fire in it at some time.

When installing a gas, multi fuel or wood burning stove in an existing chimney breast a chamber has to be created, which can be difficult to get square. The Stove Box slots in, face fixes then with a wide choice of interiors you can create your own fireplace. The liner then is brought down the chimney and connects to the stove with various adapters. With the adjustable collar, this makes it easier on site to get a complete seal from pot to the stove.

This enables the stove to work as the manufacturers recommend. The stove box is surrounded by an insulation mix which improves the output of the stove into the room rather than a percentage going out through the sides, back and above especially on an exterior breast in an installation with the more conventional register plate install.

## OPTION 2

There are 4 easy options for installing The Stove Box

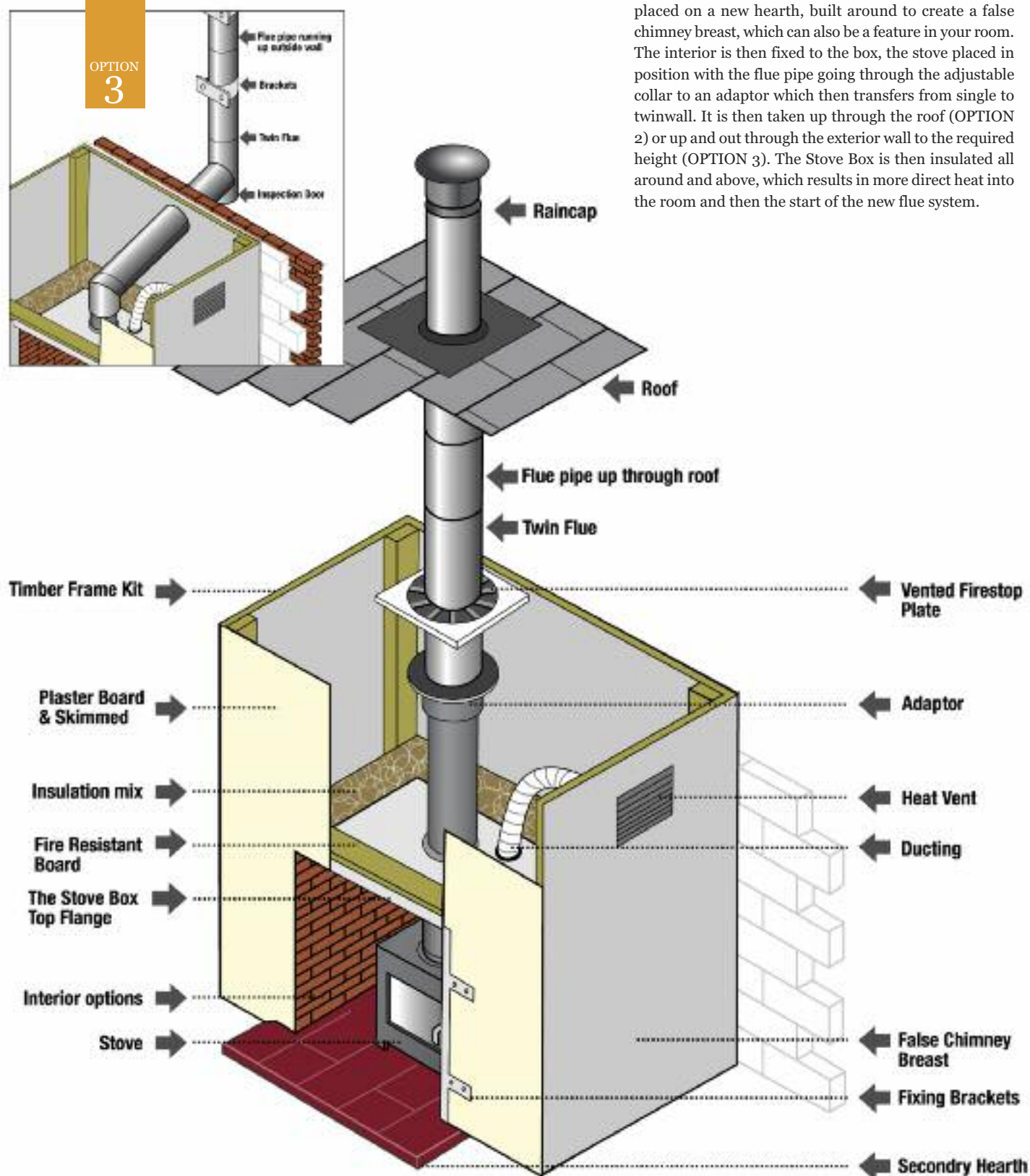
# No Chimney Options

### External Chimney Option

OPTION  
3

How to fit option 2/3:

When a new flue system is required, The Stove Box is placed on a new hearth, built around to create a false chimney breast, which can also be a feature in your room. The interior is then fixed to the box, the stove placed in position with the flue pipe going through the adjustable collar to an adaptor which then transfers from single to twinwall. It is then taken up through the roof (OPTION 2) or up and out through the exterior wall to the required height (OPTION 3). The Stove Box is then insulated all around and above, which results in more direct heat into the room and then the start of the new flue system.



## Here are some examples using installation options for 2 and 3.



Lining the centre of the new chimney breast



The stove box is placed on the hearth and the false chimney breast is fitted ready for the finish, in this case the customer wanted a plasterboard and skim finish ready to paint.



Chopping out for the new flue outlet for the gas stove.



Commissioning the stove, explaining to the customer the controls



Skimmed and ready for drying to paint



Work completed



There are 4 easy options for installing The Stove Box

OPTION  
4

## No chimney no problem - Use the NEW Eco-Space Saver



The Eco-Space Saver being installed

### How to fit this option:

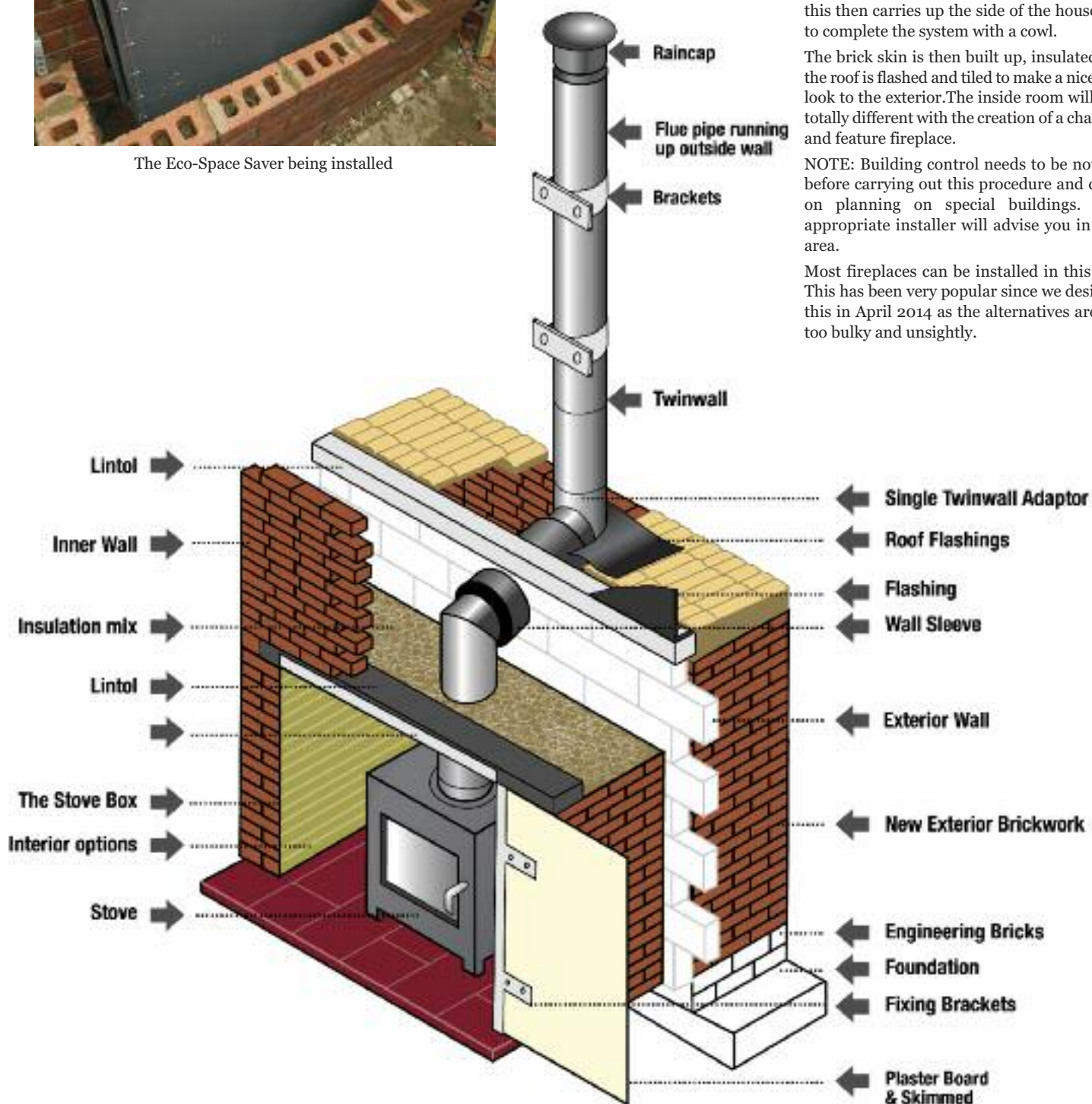
Use the new 'Eco-Space Saver' option when no chimney is present or space is an issue.

An innovative design which a stove box is chopped into the wall inside and through the outside skin to protrude from the exterior wall and the stove box is placed on a hearth and then insulated to meet the 'U' values, which is then bricked up. The interior to the box is fitted, and use one of the various adapters to take the single pipe to black twinwall where this then carries up the side of the house and to complete the system with a cowl.

The brick skin is then built up, insulated and the roof is flashed and tiled to make a nice neat look to the exterior. The inside room will look totally different with the creation of a chamber and feature fireplace.

NOTE: Building control needs to be notified before carrying out this procedure and check on planning on special buildings. Your appropriate installer will advise you in your area.

Most fireplaces can be installed in this way. This has been very popular since we designed this in April 2014 as the alternatives are just too bulky and unsightly.





## Here are some examples using the Eco-Space Saver installation option



The existing fireplace has been taken out, the foundation has been inspected and filled and the new hearth is in place. Final chopping out ready to insert the SB1 stove box.



Building from the new foundation up to hearth level.



The stove box is fitted and the interior is glued in position and a new lintel has been inserted and rendered.



The brickwork is being built around the stove box ready for the insulation mix



Insulation is being placed in position before the flue is transferred from the stove to twinwall and a new exterior lintel supports the brickwork and the roof angle is formed.



A brick arched fascia has been chosen by the customer ready for the surround.



The flue pipe has been transferred from the stove to twinwall and is ready for the roof tiles/flushing.



Brickwork and roof tiled ready to take the twinwall up.



The twinwall has been fitted and completes the work.



The rustic corbel fire surround in golden oak with the required rebate for the fascia is fixed to the wall to complete the inside fireplace.



Another eco-spacesaver completed with our plain rustic fire surround in natural waxed oak with a plain fascia plate ochre interior on a tiled hearth.



Completed work

# Introducing the NEW False Chimney Breast Kit

A quick and easy kit when a chamber is required in a house with no chimney.

This kit is ideal if you are wanting a special feature for a fireplace opening in a room lacking character. The new Chimney Breast Kit comprises of:

- A special chamber (A Stove Box) with a choice of interiors
- Carbon monoxide monitor inside the breast
- An inspection hatch
- Vents
- Bag of vermiculite
- Corner braces etc.

Standard size when fixed is:

65" x 18" x 92"- 96"(adjustable height)  
(165cm x 46cm x 234 - 244cm)

It takes around 1 hour to assemble and fit, giving a sturdy new chimney breast ready for the start of your new flue system, going up through the roof or up and out through the wall.

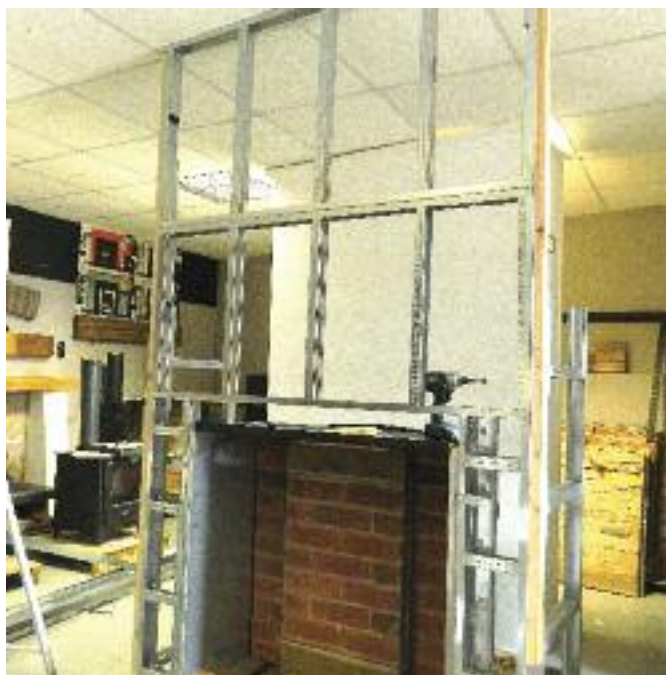
Just screw your chosen finish to the studding ie. plasterboard, and skim. Fireboard if you are wanting a tiled feature or paint for a perfect finish. We also make bespoke false chimney breasts and would be happy to quote for any size and shape.



Inspection hatch for checking the connection to the stovepipe to twinwall and also for servicing the carbon monoxide monitor.



Vents



A selection of frames that have been welded. Just fix to make a quick and sturdy new chimney breast.











**Gainsborough - The Stove Shop**  
**130 Trinity Street, Gainsborough DN21 1JD**  
**Telephone : 01427 613624**

**Email: [sales@thestovebox.co.uk](mailto:sales@thestovebox.co.uk)**

**[www.thestovebox.co.uk](http://www.thestovebox.co.uk)**

